
SPECIFICATION FOR APPROVAL

| | |
|-------------------|---------------------------|
| Product | PIEZO BUZZER (SELF DRIVE) |
| Part No. | AZ-2335S-P |
| Customer Approval | |

| Approved By | Checked By | Made By |
|-------------|------------|---------|
| | | |



A & B Components

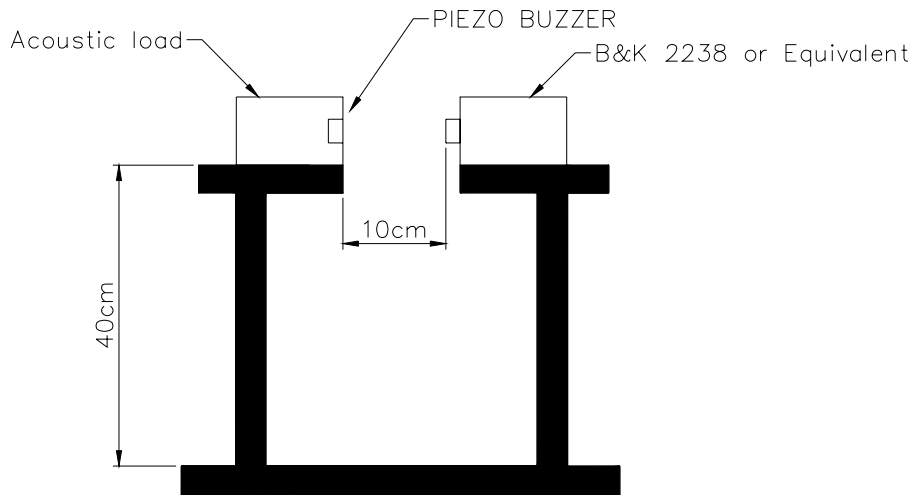
<http://www.speaker-tw.com>

AZ-2335S-P

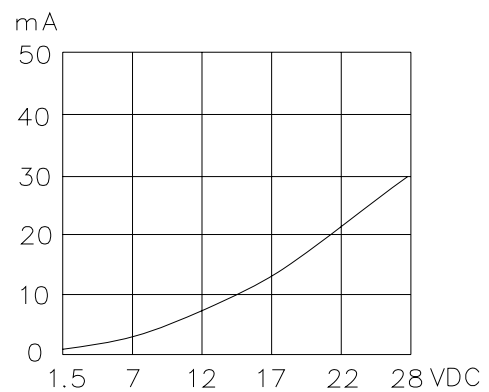
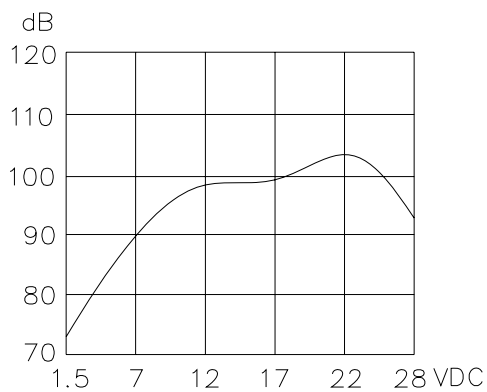
| Items | | Units | Specifications | Conditions |
|-------|----------------------|----------|----------------|------------|
| 01 | Rated Voltage | VDC | 12.0 | |
| 02 | Operating Voltage | VDC | 1.5~28 | |
| 03 | Rated Current | mA(Max) | 10 | At 12 VDC |
| 04 | Sound Output At 10cm | dBA(Min) | 85 | At 12VDC |
| 05 | Resonant Frequency | Hz | 3500±500 | |
| 06 | Operating Temp. | °C | -20 ~ +60 | |
| 07 | Storage Temp. | °C | -30 ~ +70 | |
| 08 | Tone Nature | Single | | |
| 09 | Weight | g | 4 | |

Value Applying Rated Voltage (VDC)

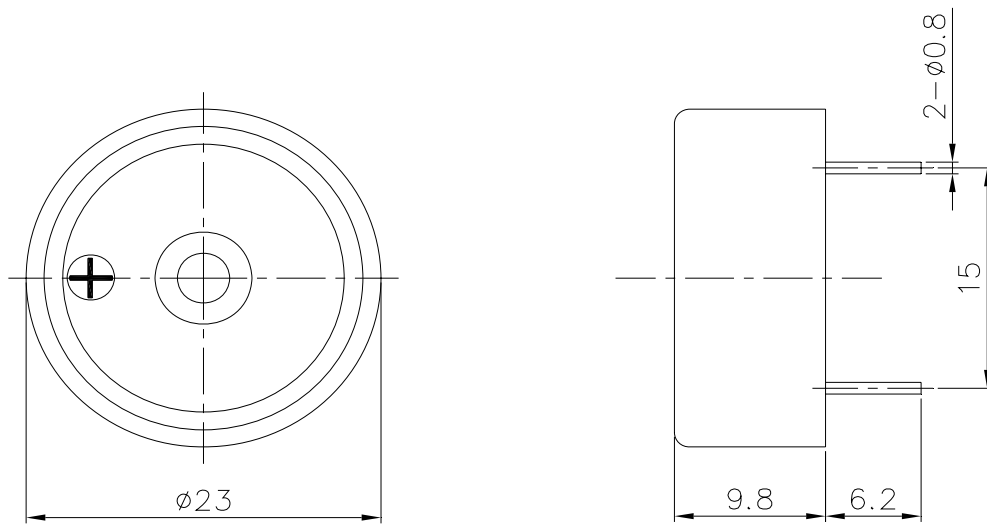
STANDARD TEST FIXTURE



Characteristic



| | | | |
|---------|---------------|----------|------|
| REV NO. | REVISION NOTE | APPROVAL | DATE |
|---------|---------------|----------|------|



| | | | | | | | |
|----------|--------------|-----------|---------------------------|-----------------------------|-----|-----------|--------|
| TITLE: | PIEZO BUZZER | DRAWN: | <i>Richard</i> 08/17/2001 | SCALE: | 2:1 | SHEET: | 1 of 1 |
| PART NO. | AZ-2335S-P | DESIGNED: | R & D DEP. | UNITS: | mm | TOLERANCE | ± 0.3 |
| DWG NO. | DPT-1013 | CHECKED: | | UNLESS OTHERWISE SPECIFIED: | | | |
| | | APPROVAL: | | ONE PLACE DECIMAL ± *** | | | |
| | | MATERIAL: | ABS | TWO PLACE DECIMAL ± *** | | | |
| | | | | THREE PLACE DECIMAL ± *** | | | |

A & B Components

AZ-2335S-P

| Item | | Conditions | Evaluation standard |
|------|-----------------------------|---|--|
| 01 | Low Temp. Storage Test | A°C±2°C ,240Hr | (S.P.L)Test before numerical ±10dB *wrong (Frequency)Test before numerical ±10% (Current)Test before numerical ±10% (No crake is allowed on the part surface after Free drop test) ● After the test ,the part shall meet the specifications without any degradation in appearance and performance |
| 02 | High Temp.Storage Test | B°C±2°C RH50% ,240Hr | |
| 03 | Temp./Humidity Storage Test | 40°C±2°C , RH90-95% 240Hr | |
| 04 | Thermal Shock Test | A°C±2°C (1Hr)→ ,20°C±2°C (1Hr) B°C±2°C (1Hr)→ ,20°C±2°C (1Hr)10 cycle | |
| 05 | Vibration Test | 10-55Hz/1min amplitude1.5mm,X,Y,Z,3 directions | |
| 06 | Mechanical Shock Test | +100G,Sine wave, XYZ , 3 impacts per axis | |
| 07 | Free Drop Test | The part shall be dropped freely from a height of 75 cm onto concrete 1 time in 2 axes (total 4 times) | |
| 08 | Life Burning Test | The part shall be subjected to 1000 hrs in the room temp with rated voltage applied | |
| 09 | Lead Wire / Pin Pull Test | The Part checking standard : Following supplier's Spec. Finished-part checking Standard vertical Pull i)100g MIN 0.05mm Thickness of ceramic ii)300g MIN 0.1mm ≤ Thickness of ceramic b: Horizontal Pull i)700g MIN | |

Remark : "A"means Storage low temp. "B"means Storage high temp